

File Name: cos2010 manual.pdf

Size: 1540 KB

Type: PDF, ePub, eBook

Category: Book

Uploaded: 5 May 2019, 17:40 PM

Rating: 4.6/5 from 732 votes.

Status: AVAILABLE

Last checked: 1 Minutes ago!

In order to read or download cos2010 manual ebook, you need to create a FREE account.

[**Download Now!**](#)

eBook includes PDF, ePub and Kindle version

[Register a free 1 month Trial Account.](#)

[Download as many books as you like \(Personal use\)](#)

[Cancel the membership at any time if not satisfied.](#)

[Join Over 80000 Happy Readers](#)

Book Descriptions:

We have made it easy for you to find a PDF Ebooks without any digging. And by having access to our ebooks online or by storing it on your computer, you have convenient answers with cos2010 manual . To get started finding cos2010 manual , you are right to find our website which has a comprehensive collection of manuals listed.

Our library is the biggest of these that have literally hundreds of thousands of different products represented.

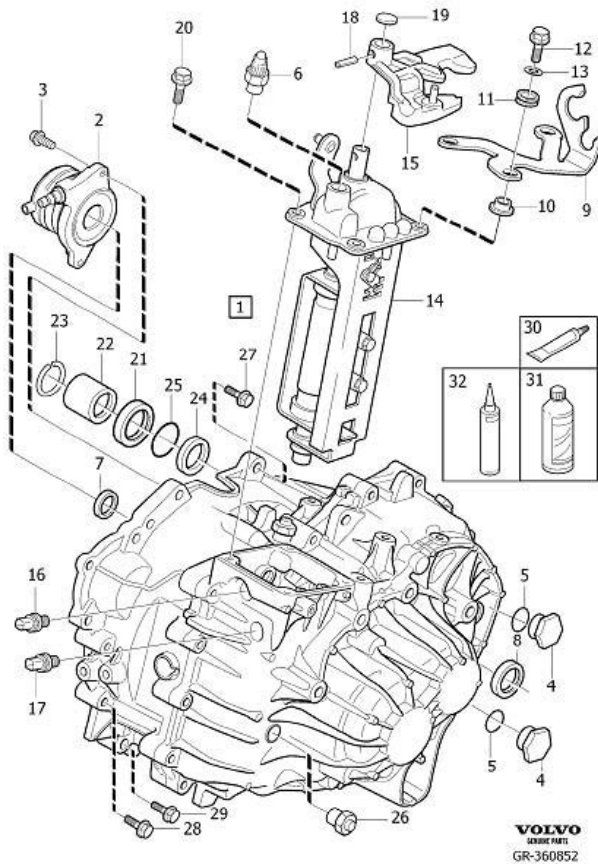


Book Descriptions:

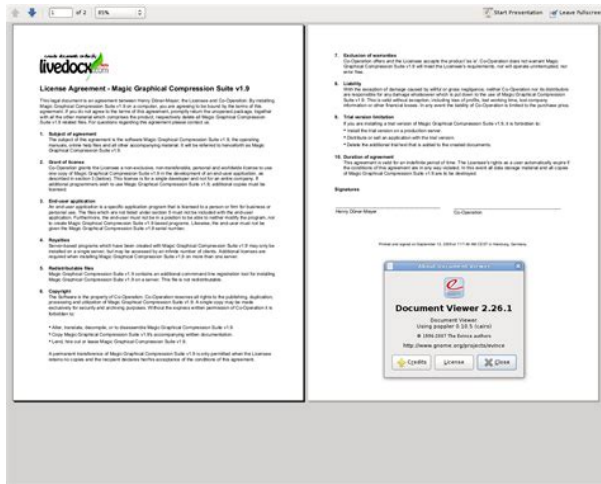
cos2010 manual

Plus we cover 2 way shipping on items deemed defective on arrival. \n\t FREE TECH SUPPORT were here to help both before and after your purchase. Contact us by phone or email for help, plus we offer a well stocked self serve knowledgebase covering many tech subjects. \n\t WARRANTY SUPPORT We facilitate warranty returns on our products. When you shop at big box or Amazon, after 30 or 60 days you must deal with the manufacturer in the USA or China adding higher freight costs, border issues, duties and brokerage fees. Some brands such as DSC will NOT offer support to the general public so if your supplier doesnt offer warranty support, your purchase becomes an expensive paperweight. \n\t IN BUSINESS SINCE 2002 we are here and growing because we appreciate and respect our customers. Weve been around the block and we will be here when you need us. \n\t FAST SHIPPING Most instock orders ship the same or next business day. \n\t NO DUTIES OR BORDER FEES We ship all of our Canadian orders from within Canada. Canadian customers NEVER have to worry about surprise costs like exchange rates, duties or brokerage fees. Call UPS and ask! \n\t WE STOCK PRODUCT Aartech Canada stocks a large selection of products locally in our Ontario warehouse for quick shipping or pickup. Each product page indicates live stock availability at OUR warehouse, not some drop ship facility like many other sellers. \n\t FLAT RATE AND FREE SHIPPING We offer low cost flat rate and free shipping options to Canada and USA \n \n \n \n \n \n \n \n Aartech Canada is a Canadian owned and operated business since 2002.SA360 and COS2010 have been discontinued however replacements are available as noted below. You will need to use the new brackets and harness as the old ones wont fit. Your life is worth a lot more than the cost of the detectors and youll save on shipping if you buy multiple units. As always if you are not comfortable please hire an experienced contractor to do the work. Powered by zeckoShop.<http://vitraze.skloart.cz/media/upload/upload/first-night-stories-in-tamil-manual.xml>

- **cos2010 manual, american sensors cos2010 manual, cos2010 manual.**



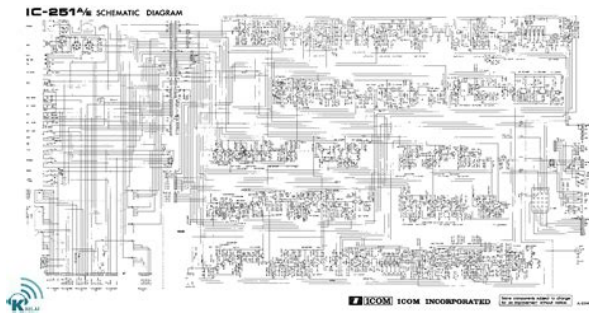
Discover everything Scribd has to offer, including books and audiobooks from major publishers. Start Free Trial Cancel anytime. Report this Document Download Now Save Save Manual Cos2010 For Later 0 ratings 0% found this document useful 0 votes 75 views 59 pages Manual Cos2010 Uploaded by Ryan Rawlings Description Full description Save Save Manual Cos2010 For Later 0% 0% found this document useful, Mark this document as useful 0% 0% found this document not useful, Mark this document as not useful Embed Share Print Download Now Jump to Page You are on page 1 of 59 Search inside document Browse Books Site Directory Site Language English Change Language English Change Language. Closed the battery compartment and installed it. It kept making beeping noise every few seconds. Uninstalled the product, removed the battery and inserted it upside down and closed the battery compartment. Read more I received the product on time but very disappointed. The instructions said to pull the tab to activate the battery. There was no tab to pull. It took me almost 2 hours to get it right. The instructions did not mention that I had to turn the battery upside down. In my opinion, this product was returned by someone and then shipped to me. Verified Purchase Couldnt be happier I just installed one of these to replace an old COS2010 that had reached end of life. The COS2010 didnt have a battery backup so this is an improvement its hard to believe that was even allowed by building codes. Read more I just installed one of these to replace an old COS2010 that had reached end of life. The model number of the new unit is actually SC9120BA if anyone is wondering, I dont know where Amazon got the C from. The new unit is interoperable with another COS2010 thats still running in my house if I test one, both start beeping. One tip it comes with a battery sticking out of the compartment. <http://go2cargo.com/userfiles/first-need-xl-water-purifier-owner-manual.xml>



You have to flip the battery around before pushing it in, otherwise it wont work and youll get the dead battery warning as soon as you connect it to the AC. Verified Purchase Instructions provided were not for this unit.rather the unit came with the battery tipped out in a little side area. I install it, push the little side are in, and it starts beeping making the dog super antsy. I pull the battery out, assuming its dead, test it, its fine. Read more The instructions provided indicated that you had to pull a strip to activate the backup battery. There was no such strip, rather the unit came with the battery tipped out in a little side area. I put it back, same problem, and then I notice there are no contacts for the battery. It turns out you have to turn the battery around before you seat it again, the instructions were to pull out a strip to activate. So, two things send the proper instructions, and design it so that you cant close the battery compartment if the battery isnt in properly. Wasted my time diagnosing your bad product design and packaging. Verified Purchase Took FOREVER to get it to stop beeping when installed. When I installed it, this thing kept beeping and we couldnt figure out why. Long story short, you have to have a 9volt battery, guess which way to install it it doesnt have any indication on the alarm, then hold the button down for a few. Read more When I installed it, this thing kept beeping and we couldnt figure out why. Long story short, you have to have a 9volt battery, guess which way to install it it doesnt have any indication on the alarm, then hold the button down for a few seconds. Discovered all this by trial and error. There are a zillion different beeps that all mean different things. The whole process was incredibly irritating and took way, way, way, way, way, way longer than it would have with half decent instructions or a smarter design. Verified Purchase Great replacement unit.a much older unit made by American Sensors.

Replacement was easy and painless. Installation instructions were quite good. The unit was fairly freshly manufactured. Worked really well. It comes with a bunch of lockout options and pins lockout. Read more I bought as a replacement for a much older unit made by American Sensors. Worked really well. It comes with a bunch of lockout options and pins lockout battery compartment, lockout base and etc.. I did not use any of the lockouts, but read the instructions and they were not very clear. The drawings in the instructions were more confusing than helping to identify the pins and lockout holes. Still, it is possible to figure it out by trying things. Overall a great replacement unit and it has a battery backup the old unit did not. So far it has been working really well. Verified Purchase Bulkier than I thought itd be, but easy to install..I knew it was not like that from the picture. My only issues were that the manual referred to a tab to pull that simply did. Read more I dont know if its because of the battery, but this one is definitely bulkier than the one I used to have. I also wish they made it all white so that it would look better on the ceiling but I knew it was not like that from the picture. My only issues were that the manual referred to a tab to pull that simply did not exist, and the polarity of the battery wasnt specified. I shut down the breaker and tested the alarm and they still work in the network even when powered by just the battery. Also note that it fluoresces in the dark a little bit. I do have some concerns about the longterm performance of this device, as some reviews suggest it could break down after a number of years. Verified Purchase

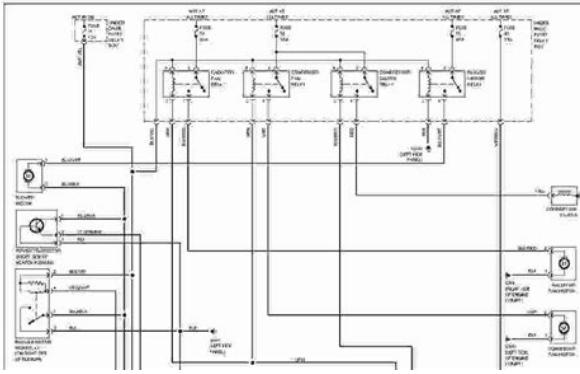
Didn't live up to the hype. connector to connect to the female plug on the back of the detector. So I installed it without connecting to AC and the battery died in three months. Went to replace the 9V battery and the battery door wouldn't open without some force.



<https://www.becompta.be/emploi/boss-lmb-3-bass-limiter-enhancer-manual>

Pretty disappointed in this smoke detector. The packaging states it's an AC powered detector which it is, but it doesn't come with the male wiring connector to connect to the female plug on the back of the detector. When I got it open I couldn't insert a new 9V without forcing it down, then the door wouldn't swing close. The door is a horrible design. Now, 4 months after purchasing this thing is a brick. Verified Purchase Possible error in the Installation Instructions in User Manual. definitely appears to be a problem with the User Manual, specifically, the Installation Instructions. Read more Overall, the unit appears to be decent quality, however, there definitely appears to be a problem with the User Manual, specifically, the Installation Instructions. We initially installed following the rest of the instructions and did not reposition the battery during installation. This was unsuccessful, as we immediately started to hear the roughly once-a-minute beep indicating low battery. Would suggest the manufacturer address this for future units and send an email to customers who have already purchased the unit with the incorrect instructions. Verified Purchase Great peace of mind. The installation booklet is a little difficult to follow, however it works the same way as most alarms and once you put it up, it makes sense. Very nice alarm and doesn't trigger when you have smoke from cooking or showers like our old alarm. Read more The installation booklet is a little difficult to follow, however it works the same way as most alarms and once you put it up, it makes sense. It is quiet and unobtrusive. We appreciate the carbon monoxide feature as well. Would definitely buy it again. Read other reviews that mention Should you go with this model, please be advised that it is not standalone like your old unit, but required a 9-volt battery as backup. Read more Before you replace your old unit with this one, please check the manufacturing date on yours and call the company.

<http://www.maivalueconsulting.com/images/96-dodge-ram-1500-owners-manual.pdf>



These units are warranted and are replaced free of charge if within 5 years of installation. Should you go with this model, please be advised that it is not standalone like your old unit, but required a 9volt battery as backup. The batteries were in backwards.LOL.Besides that,they were an good replacement for my existing 20 year old detectors.Ontario now mandates CO detectors in every residence.This dual alarm solution fit the bill. Verified Purchase Fit and wokrs Had an issue with the one installed in my house. It would beep twice every minute. After reading the manual it it said I needed a replacement. I looked up the serial number and ordered from Amazon. It took less than a week to arrive using my Prime. Read more Had an issue with the one installed in my house. It took less than a week to arrive using my Prime account. Once it was here, I installed it and BAM, worked great. Verified Purchase Great purchase.beeping or chirping. The back up batteries that are included are intentionally installed upside down to avoid draining the battery. The units were manufactured in November 2018 and ordered them in January 2019. Read more I purchased 3 to replace the older ones I had and I'm very satisfied. They work great. no random beeping or chirping. The back up batteries that are included are intentionally installed upside down to avoid draining the battery. I love the fact that all 3 units are synced and will simultaneously beep when there's something. I would definitely recommend this model. Verified Purchase 2 out of 3 failed Originally purchased this a year ago and had to replace it as soon as I installed it as it was faulty. The replacement worked fine until today 1 year plus a day or two when it should work between 510 years; depending on who you talk to. Read more Originally purchased this a year ago and had to replace it as soon as I installed it as it was faulty.

<https://www.mapefumigaciones.es/images/96-dodge-ram-1500-repair-manual.pdf>

Not sure if was a bad year for these or not, but make sure you understand your options for returning or exchanging when buying this here vs a store. Verified Purchase No issues so far Very easy to install. I read some earlier reviews complaining about the manufacturing date. I ordered 3 units in November 2016, and the manufacturing dates were August 2016. So, no issue for me. I also read reviews complaining that the units did not. Read more Very easy to install. I also read reviews complaining that the units did not work properly continual beeping. Be aware the interconnect function works only with the same family of devices. If you interconnect one of these with a different device or manufacturer, it likely wont work properly, and will continually beep. Guess I wont know how well they work until I have a problem fingers crossed I dont have one, but if I do, they better perform as designed. Verified Purchase The alarm was defective..such an obvious defect was immediately apparent on casual inspection before installation. Bought a Kidde replacement overall better quality and highly recommended. Amazon of course provided a full refund. Read more The alarm was defective the battery case was missing as were the terminals. Extremely poor quality control QC makes one wonder how good their overall QC is when such an obvious defect was immediately apparent on casual inspection before installation. Verified Purchase Satisfied.the home so I wanted to find a replacement. It is important as the models were installed to be synchronized so when one goes off they all go off. I like that I could reattach it to the same plug and mounting bracket that were already in. Read more Im pretty happy with it. I have 3 other existing first alert alarms in the home so I wanted to find a replacement. I like that I could reattach it to the same plug and mounting bracket that were already in position. Took less than a minute to install.

This new model is better than the original builder grade model. Comes with a battery back up and a 10 year warranty. Verified Purchase Didnt respond right away. I installed this device, and I had a professional come and inspect the installation as a result of a promotional program. He sprayed a testing aerosol and the alarm didnt respond as he stated it should have. Read more I installed this device, and I had a professional come and inspect the installation as a result of a promotional program. By that time I had thrown away the packaging and it would have been more of a hassel to uninstall the alarm. Bought a cheap battery one and placed it near by instead. Verified Purchase Easy to install and the sound is loud. You get smoke and Co alarm. I like it and comes with battery. Have it installed for over 3 months and it pass the City of Calgary inspection. Going to replace all my old smoke with this one for the added carbon Monoxide. Verified Purchase Amazon ones don't seem to work Bought it because it was the same brand I had in my condo. As soon as the super installed it, it started beeping. My neighbour who bought the same in amazon had the same issue and had to look for another one at a store. Read more Bought it because it was the same brand I had in my condo. Her new one is working, I need to do the same. Guess the issue is with amazon ones. Show 20 more reviews. WARNING This relay will not operate without continuous AC power. Do not use with battery backup units. CAUTION Do not interconnect Model No. CB100 to any other manufacturer's units. RATING 120VAC, 100mA Both normally open and normally closed contacts are available to control the auxiliary device. 7. Cap any unused leads with a wire nut. 8. Insert the relay module into the junction box and install the faceplate. 9. Apply power to the circuit and test the smoke alarm and the auxiliary relay device for proper operation. MODEL MODEL NO. NO. CB100 CB100 2502A0032REVA Page 1 Next.

<https://www.euroservicemilano.it/wp-content/plugins/formcraft/file-upload/server/content/files/162866a711e7eb---C510-service-manual.pdf>

Dust Cover is included to keep the alarm clean during construction. CO Alarm Models CO5120BN, CO5120PDBN. INTRODUCTION. Thank you for choosing BRK Brands, Inc.Monoxide Alarm needs. Frequently bought together. Alarm Reset Automatic when CO clears.Silence Feature and.Pay special attention to these items. IMPORTANT! THIS IS NOT A SMOKE ALARM. This CO Alarm is designed to detect carbon monoxide from. ANY source of combustion. It is NOT designed to detect smoke,

fire, or any other gas. It also features a 9V battery. Hardwired interconnected smoke and CO alarm with battery backup. BRK smoke and carbon monoxide alarm manual sc9120b. Review of first alert BRK sc9120b hardwire combination smoke and carbon monoxide alarm. The alarms are interconnectable up to 18 devices, of which 12 can be smoke alarms. The BRK CO5120BN features an electrochemical carbon monoxide sensor, an 85dB horn, 9V battery backup and a silence feature. Carbon Monoxide Alarms; Smoke Alarms. Why Does The Horn "Chirp" Once A Minute. Why Does The Horn "Chirp" Once A Minute On My Battery Powered CO Alarm. The battery may be low or weak. Can I Remove The Battery From The CO Alarm To Silence Or Reset It. NO! Can I Test A CO Alarm Any. Alarms operation. If you are installing this Alarm for. This CO Alarm is designed to detect. Results 1 48 of 144. The BRK SCO2B features a dual ionization smoke sensing chamber and an electrochemical carbon monoxide sensor, 9V battery powered, an 85dB horn, an End of Life and a silence feature. The SCO2B. Hardwired smoke alarm with battery backup meets codes where a photoelectric smoke sensor is required for new construction. This CO Alarm is designed. If there is, move the alarm away from the source of the increased airflow. NOTE View the correct alarm placement in your users manual. Temperature; Check the temperature of the room. Smoke alarms operate at 40 degrees to 95 degrees Fahrenheit. Carbon monoxide alarms operate at 40 degrees to 100.

First Alert provides the most reliable fire safety products like fire, smoke, and carbon monoxide alarm systems, CO2 detectors, fire extinguishers, and fire escape ladders for home. Ensure your home is protected with First Alert safety products. First Alert F BRK Brands C Inc. This combination smoke and carbon. First Alert BRK 3120B Hardwire Dual Photoelectric and Ionization Sensor Smoke Alarm with Battery Backup. This hardwired smoke alarm features. Perfect for apartment, dormitory or hotel applications. Description BRK ZCOMBOG model ZCOMBO is a single station combination smoke and CO alarm specifically designed for residential and. Many people have smoke alarms that also function as carbon monoxide detectors. Make sure you know what kind you have. The significance of different beeping might mean different things for different types of detectors. If your detector is low on battery, you will likely hear a short chirp every minute. Tagged as 9 volt battery, after new battery, alarm beeping, Beeping, beeping 3 times, carbon monoxide alarm beeping, change battery, chirping at night, every 30 seconds, first alert, for no reason, Hard Wired, hardwired, how to reset, kiddie firex, no battery, smoke alarm beeping, smoke alarm chirping, with. This is our favorite smoke detector that doubles as a carbon monoxide CO alarm because it connects to your internet-enabled devices to alert you when the battery is low or when an alarm sounds. The first generation of the Protect left much to be desired, but the second generation is a huge step up. All of the issues with. Results 1 31 of 31. BatteryPowered Combination Smoke and Carbon Monoxide Detector Photoelectric Sensor. First Alert BatteryPowered Combination Smoke and Carbon Monoxide Detector Photoelectric Sensor. Smoke and Carbon Monoxide Alarm. Can be mounted on wall or ceiling. Meets both UL217 and UL2034. Includes 9volt alkaline battery. Ionization smoke sensing technology provides warning in case of fire.

CO alarm warns of elevated CO levels. It detects both flaming fires and CO hazards. Listed to. M300 Micro Ionisation Smoke Alarm The BRK Micro 300 Smoke Alarm is a general purpose, 9 volt battery operated device incorporating the latest technology for sensing visible or invisible particles of combustion. Features 9. Fire Protection Smoke Alarms Smoke, Heat, CO Alarms Battery Smoke Alarms Fire and Security. A person changing a battery to reset a smoke alarm. If your smoke alarm has a lithium battery you can't take out, muffle it in a blanket, under a sofa cushion, or in your freezer until it stops. Power Type HardWired with Battery Backup; Sensor Type Ionization; Product Type Smoke Alarm; Volts 120 volts; CSA Listed No; UL Listed Yes; Number in Package 1 pk; Test and or Reset Button Yes; Indoor and Outdoor Indoor; Color Family White; Detects Smoke Yes; Detects Carbon Monoxide No. The smoke alarm must clear errors after the battery is changed, but it might continue to chirp even after you change the batteries. This usually occurs in electrical

powered smoke alarms with a battery backup. When this happens, the way to stop the chirping noise is to. If your smoke alarm is beeping just once every couple of minutes this usually means a low battery. Even if your. Find the smoke alarm that is beeping and put a new battery in it. If your smoke alarm is beeping 4 times in a row followed by a pause repeated, this means there could be CO in the house. Of course, smoke alarms are designed to make noise when its most important. Smoke alarms save lives by alerting family. Trust Grainger to help supply you with carbon monoxide and smoke alarms that can detect potentially dangerous conditions and alert workers. It features a photoelectric smoke sensing chamber and electrochemical CO sensor. Applications include residential and institutional applications including hospitals, hotels, motels.

WHAT TO DO Consumers should call 18003239005 to obtain replacement wiredin smoke detectors free of charge. WASHINGTON, D.C. In cooperation with the U.S. Consumer Product Safety Commission CPSC, BRK Electronics of Aurora, IL, is voluntarily recalling certain models of wiredin. Online Price More Information. Just one of many reasons BRK is your best choice in competing in todays competitive market. Wireless Interconnect System. Battery Smoke Alarms Ionization. Battery Smoke Alarms Photoelectric. Battery CO Combinations. 9 of 9. BRK 230V Mains Optical Smoke Alarm with Lithium Battery White. BRK Push Fit Mains Ionisation Smoke Alarm with 9V Battery Back Up White. This leading brand name in the fire safety world has been producing domestic and commercial fire alarms, smoke alarms and carbon monoxide detectors. Reset or silence the beeping using keypad commands, if possible Check your alarm owners manual. Notify your alarm company if. Alkaline batteries maintain a steady voltage for many months, especially in lowdemand devices like smoke alarms, CO detectors, and other types of fire alarms. CO detectors, smokes, and. Shop for SC9120BA BRK Smoke and Carbon Monoxide Detector 120V with Battery Backup COS2010 Replacement SC9120BA deals in Canada. FREE DELIVERY possible on eligible purchases. Lowest Price Guaranteed. CO2 fire detectors are not susceptible to false alarms due to particles, making them particularly. Free delivery and returns on all eligible orders. If you have changed the battery in your chirping smoke detector and it still chirps, you might think your detector is bad. Before you replace that smoke detector or go out and purchase another new pack of ninevolt batteries, there are a couple things you should know about your smoke detector, and a few. One of the best ways to keep you and your family safe is to install a smoke detector in every room. Check out the Best Smoke Detector 2018 here.

Meanwhile, smoke alarms are fairly sensitive pieces of equipment, responding to voltage fluctuations more readily than other electrical infrastructure. Many homeowners assume that a chirping smoke alarm always means a low battery signal. But often, night chirping occurs when the whole apparatus. BRK 670MBX 679 Dicon Ionisation Alarm with 9V Battery Backup 81969. The CO605B Series is a plugin CO alarm with battery backup and meets most state and local codes for carbon monoxide alarms. Results 1 48 of 824. Shop with confidence on eBay. The SA350B is a lithium powered battery operated Dual Ionization smoke alarm that gives you ten years of protection and a tamperproof sealed battery. The BRK CO605B is a direct plug in Carbon Monoxide alarm with battery. Perfect for apartment, dormitory or hotel applications. CAT. HD6135FB. 120VAC, 60Hz Wirein with 9V Battery Backup. The BRK Brands, Inc. SC9120BA 120Vac Hardwire Battery Backup Smoke and Carbon Monoxide Alarm. Intelligent Ionization Sensing Technology; Advanced Electrochemical CO sensor. BRKs smoke and heat alarms can be fully integrated into BRKs Flexipoint minisystem. PHOTOELECTRIC SMOKE ALARMS MAINS 230V. 7010LBE Mains operated with a sealed lithium battery back up in case of mains failure. A locking feature deters removal of the alarm. Consumers should stop using recalled products immediately unless otherwise instructed. Manufacturer BRK Brands Inc., a subsidiary of. BRK CO710 10 Year Battery CO Alarm with Digital Display. Get it today. Same Day delivery 3.95, or fast store collection. Put new batteries into the detector if needed. Battery powered detectors can be installed anywhere. How to Install a Smoke and Carbon Monoxide Detector Step 2. Separate the unit from the frame. How to Install a Smoke and

Carbon Monoxide Detector Step 3. Decide on a place on the ceiling or on the wall 410 inches.
DownloadBrk smoke and carbon monoxide detector user manual. Free Pdf.

Download The first thing you have to do is pick the format you wish to design. Brk smoke and carbon monoxide detector user manual. Download Brk smoke and carbon monoxide detector user manual. Manufacturers part number CO850 mBXi. Interlink up to 12. If either kind of alarm starts beeping continuously, its time to get out of the house. So, to sum up Get out of the house and call 911 if either the smoke alarm or the carbon monoxide alarm starts beeping loudly. Change the battery if either alarm chirps one quick little beep every few minutes. The BRK SC9120B hardwire combination smoke and carbon monoxide alarm detects two hazards with one simple unit. Buy Now. Smoke detectors are designed to make a chirping noise once the battery needs changing. Newer smoke alarms retain some errors in a processor. The smoke alarm should clear errors after the battery is changed, but it may continue to chirp even after you change the batteries. This also occurs in smoke. Sign up now Sign up now. They are hard wired. My existing wiring shows 4 cables, black white pink brown. The new detector needs 3 wires, black white and red for inter connectivity with other detectors which I want. Can someone clarify how im supposed to hook this up Thx. Pics. 1%20PM.jpg. 8%20PM.jpg The ones you purchased use a standard household 120 volt circuit 2 wire black and white with the red wire used as a signal lead between detectors on the circuit. The advantages to the newer 120 volt detectors is that they can be run anywhere along a circuit, and do not actually need a dedicated circuit. A circuit could run from the panel to a few duplex outlets, then up to a ceiling light, to another ceiling light, then to a smoke detector, a couple of duplexes and lights on the second floor, and finally a second smoke detector. All that needs be done is having a run of three wire cable with the reds connecting in each box and to each detector. I do have opinions, and readily share them!

I just looked up the manual Orange and brown are the inter connectivity wires. I guess what I saw as pink is orange. Anyway, so does that mean I tie the orange and brown together an dconnected that to the red on the new one The red wire on the new units is for communication between the two The extra brown wire was on the smoke detector harness side. Both interconnected and working fine Funny enough when I installed the first one I tested it and it was interconnected with the other brand and they both communicated just fine with each other. Well thats that for another 10 years lol Congrats to the Winners.

<https://skazkina.com/ru/boss-lmb-3-bass-limiter-enhancer-manual>