



**File Name:** bunn thermofresh btx-b manual.pdf

**Size:** 2314 KB

**Type:** PDF, ePub, eBook

**Category:** Book

**Uploaded:** 14 May 2019, 22:41 PM

**Rating:** 4.6/5 from 660 votes.

**Status:** AVAILABLE

Last checked: 3 Minutes ago!

**In order to read or download bunn thermofresh btx-b manual ebook, you need to create a FREE account.**

**[Download Now!](#)**

eBook includes PDF, ePub and Kindle version

[❑ Register a free 1 month Trial Account.](#)

[❑ Download as many books as you like \(Personal use\)](#)

[❑ Cancel the membership at any time if not satisfied.](#)

[❑ Join Over 80000 Happy Readers](#)

### Book Descriptions:

We have made it easy for you to find a PDF Ebooks without any digging. And by having access to our ebooks online or by storing it on your computer, you have convenient answers with bunn thermofresh btx-b manual . To get started finding bunn thermofresh btx-b manual , you are right to find our website which has a comprehensive collection of manuals listed.

Our library is the biggest of these that have literally hundreds of thousands of different products represented.



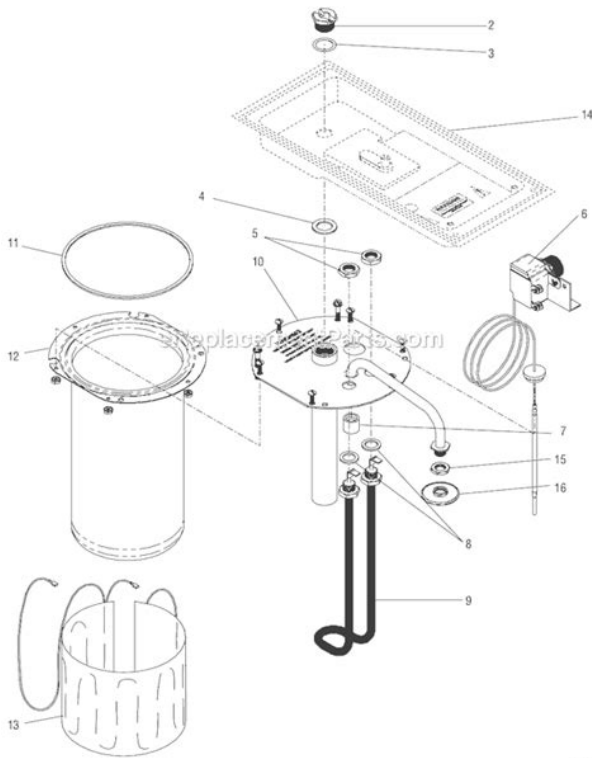
## Book Descriptions:

### bunn thermofresh btx-b manual



For use with BTXB. Table of Contents Important Safeguards.2 General Information.3 Hot Water.3. This constant supply of hot water assures correctly brewed coffee in less than three minutes. Swivel or lift brewer lid and pour water into brewer. Cup after flavorful cup, year after year, nothing brews like a BUNN. The Patented BUNN Brewing Difference. PERIODIC CLEANING You should clean your BUNN brewer at least every 3 months. The frequency of cleaning depends on the mineral content of your water. 1. Slide an empty brew funnel into the brewer under the sprayhead and center an empty decanter on the base plate. Place decanter on the base plate and close the lid. When water has stopped flowing from the brewer, empty the decanter. Repeat this process and set the decanter aside. To drain your brewer, use the following procedure 1. Your selected catalog region indicates that you are outside the U.S. Please change your region to North America U.S. if you wish to check out. For international orders please call us at 1 217 529 6601. Page Count 32 NothingStainless. Steel TankSprayhead. Carafe Lid. Brew. Funnel. Carafe. Vacation. SwitchThis brewer has an attached,Components include an 800watt tank heater and aBrew Capacity Four to 10 fiveounce 5 oz cups per batch. Weight 8.0 pounds; includes decanter, filters, coffee funnel,The BUNN logo is a trademark of BunnOMatic Corporation.Thank you for purchasing a BUNN home brewer. BUNN home brewersTable of Contents. Important Safeguards.2. General Information.3. Hot Water.3. Initial Set Up Guide.4. Brewing Perfect Coffee.5. Better Brewing.67. Cleaning and Maintenance.89. Draining the Brewer.10. Authorized Service.10. Accessories.10. Troubleshooting.11. Limited Warranty.12. Keep this bookletRecord these numbers from the bottom ofIf you need any assistance, please call us atThis symbol alerts you toRead all instructions. Do not touch hot surfaces. Use handles. Do not place cord, plugs, or brewer in water or liquid.<http://efutures thai.com/uploads/delete-compress-old-files-manually.xml>

- **bunn thermofresh btx-b manual, bunn thermofresh btx-b manual, bunn thermofresh btx-b manual, bunn thermofresh btx-b manual, bunn thermofresh btx b manual.**



Close supervision is necessary when the brewer is used by or near children. Unplug from outlet when not in use for extended periods of time and before cleaning. Allow to cool before putting on or taking off parts, and before cleaning. Do not operate the brewer with a damaged cord or plug or if the brewer malfunctions. Return the brewer to an Authorized Service Facility for repair. Using an accessory not evaluated for use with this brewer may cause injuries. For household use only. Do not use outdoors. Do not let cord hang over edge of table or counter or touch hot surfaces. Do not place the brewer on or near a hot gas or electric burner or in a heated oven. Do not use brewer for any other purpose than its intended use. Do not place or remove funnel or decanter while brewing. Do not use the decanter on a range top or in a microwave. Do not set a hot decanter on a cold surface. Do not use a cracked decanter or a decanter with a loose or weakened handle. Do not pour liquids into the water tank other than water or vinegar solution for descaling. Do not clean decanter with cleansers, steel wool pads, or other abrasive materials. When the brewer is idle, the lid should be in the closed position. If an extension cord is used, the marked electrical rating of the extension cord should be followed. The extension cord must be a three-wire cord of the three-pronged, three-socketed type. Read and follow the initial set up instructions on page 4. Preheating with hot water will increase the time your coffee is brewed. The warmer is controlled by. NOTE The warmer switch controls only the decanter warmer. If the lid is left open, the water is approximately 180°F. Using extreme caution since it may be very hot. NOTE A severe burn may result if the sprayhead becomes loose and falls off while the brewer is operating. Get hot water anytime. Just leave out the paper filter and with funnel in place, pour cold water. When water flow stops, pour out. See steps on page 5 for brewing perfect coffee. See page 4 for initial set up before brewing. Tbsp.

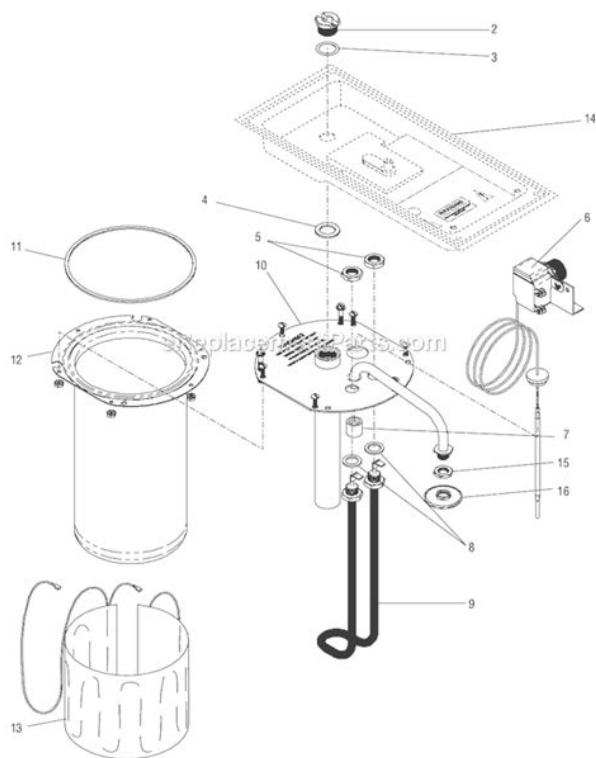
<http://bridgeofhopeet.org/ehpea/userfiles/delete-compress-old-files-manually-xp.xml>



of drip grind per cup of coffee. Do not close the lid without the Empty before brewing coffee into carafe. BUNN filters are unique. Made with a special grade of paper for D coffee BUNN home brewers are made to do exactly what BUNN commercial brewers do Cup after flavorful cup, The Patented BUNN Brewing Difference. Perfect coffee flavor is robust without bitterness and is determined by three elements Brew cycles that expose ground coffee for more With most coffee makers, water drips straight through without evenly D i d y ou of grounds into your decanter. Visit [www.bunn.com](http://www.bunn.com) or call Keep coffee stored in a clean, dry place away from heat registers and vents or Use enough coffee one to two heaping tablespoons per cup or about 1 inches of Use a thermal carafe if you plan to hold coffee more than 2030 minutes. Coffee Make sure to clean your decanter every day. Preheat the thermal carafe with hot water for best results. Use only BUNN paper filters for proper fit and function. Using a shorter filter may Dispose of filter and grounds immediately after brewing to prevent drip through of Clean your BUNN brewer with mild, dish soap and water at least once a week, Fresh, good tasting water is essential for a perfect cup of coffee. After all, ove 98% of the beverage is water. If your water contains BUNN brewer is designed to remain plugged in at all times, Unsotw Mixing Letting coffee "bake" on a brewer warmer. Twenty to 30 minutes is the maximum Vo s Serving coffee avez S a bously Reheating Occasionally, wipe the outside of the brewer, including the area above the funnel, with The brew funnel and decanter are top Please see page 9 for instructions on cleaning your thermal carafe. The frequency of deliming depends on the mineral NOTE Unplug the brewer and let it cool down before deliming. Position empty decanter on the brewer and close the lid. Water will flow into decanter. If plugged with mineral deposits or white flakes, Clean the sprayhead with a cloth and mild Empty water from decanter.

The frequency of cleaning With funnel in Proceed to Step 9. When water has stopped Repeat this process and set the Most of the water Some water may flow from the Continue tipping the brewer until the flow stops. Place the decanter on the base Repeat this process with another decanter of When flow from the funnel has stopped, empty the decanter and pour an additional Place the decanter on the base plate and close lid. Pour additional decanters of fresh, cold water into Allow the water in the tank to D i d cleaning Vo. Thermal The carafe may be disassembled Sabia. U s t e d Occasionally, the brew through valve After rinsing, Do not use a scrub pad or other abrasive V uthe caraf, as this will scratch the stainless steel surface. To remove Pour one carafe of cold water When brewing cycle Using a long handled, soft bristled Use a soft cloth and scrub hard. When finished, To drain your brewer, use the following procedure When water has stopped Repeat this process and set the Some water may flow Continue tipping the brewer until the flow stops. BunnOMatic Corporation, 1400 Stevenson Drive, Springfield, IL 62703, 800 3522866. BunnOMatic Corporation, 900 E. Townline Rd., Creston, Iowa 50801. BunnOMatic Corporation Canada, 280 Industrial Parkway S.,

Aurora, Ontario L4G 3T9, 800 2632256. To receive full assistance, please have date code ready when calling for service. BUNN Accessories. BUNN offers a complete line of accessories for Coffee Wipes help remove coffee and other food Visit [www.bunn.com](http://www.bunn.com) to order parts and accessories or call the BUNN Retail Division at Problem. Suggestions. Coffee not coming out See deliming Brewed only partial Funnel is overflowing Coffee is cold Coffee is not staying hot Loud rumbling noise. Refer to page 8. Deliming tool doesn't go in Brewer leaks. Brewers or call 8003522866.



<http://schlammatlas.de/en/node/15611>

One 1 year from the date REPAIRED OR REPLACEMENT BREWER is received by If such a defect appears during the warranty period, we will at our sole option Brewer is delivered at the customer's expense to one of the authorized service centers This warranty does not cover claims resulting from misuse, failure to follow instructions This warranty gives you specific legal rights, and you may have other rights which vary Nada cuela Tanque Cabezal Tapa de Embudo Jarra. Interruptor Los componentes incluyen Dimensiones 39.1 cm alto; 18.1 cm ancho; 35.2 cm profundidad. Capacidad de colado Cuatro a 10 tazas de cinco onzas de cada vez. Peso 3.5 kilogramos; incluye jarra, filtros, embudo de cafe y herramienta para desprender El logo BUNN es una marca registrada de Bunn O Matic Corporation. Gracias por adquirir la cafetera domestica BUNN. Sabemos que a usted le encanta el Indice. Medidas de seguridad importantes. 2. Informacion general. 3. Agua caliente. 3. Puesta a punto. 4. Como colar el cafe perfecto. 5. La mejor forma de colar. 6. 7. Limpieza y mantenimiento. 8. 9. Como vaciar la cafetera. 10. Servicio autorizado. 10. Accesorios. 10. Localizacion de fallas. 11. Garantia limitada. 12. Conserve este folleto para Este simbolo le Este simbolo le advierte Lea todas las instrucciones. No toque las superficies calientes. Utilice asas o perillas. No coloque el cable, los enchufes o la cafetera en agua o liquido. Se debe supervisar estrictamente el uso de la cafetera por parte de ninos o si estan cerca. Desenchufe del tomacorriente cuando no este en uso durante periodos de tiempo largos Permita que enfrie antes de colocarle o quitarle piezas y antes de No use la cafetera si el cable o el tomacorriente estan danados o si la cafetera no funciona Devuelva la cafetera a un Centro de servicio Utilizar un accesorio no evaluado para su uso con esta cafetera podria causar lesiones. Para uso domestico solamente. No use en exteriores.



No permita que el cable cuelgue sobre el borde de una mesa o cubierta prefabricada oNo coloque la cafetera en o cerca de un quemador electrico o a gas que este caliente o enNo use esta cafetera para cualquier otro proposito distinto a aquel para el cual fueNo coloque o retire el embudo o la jarra mientras este colando. No use la jarra sobre una hornilla o en un microondas. No coloque una jarra caliente sobre una superficie fria. No utilice una jarra rajada o una jarra que tenga la manija suelta o debil. No vierta en el tanque liquidos distintos de agua y una solucion de vinagre para laNo limpie la jarra con limpiadores, esponjas de lana de acero u otros materiales abrasivos. Cuando la cafetera no este en uso, la tapa debera estar en la posicion cerrada.Si se utiliza un cable de extension, la capacidad de corriente del cable de extension debe serEl cable debera colocarse de tal forma que no cuelgueEl cable de extension debera ser del tipo con tres clavijas, tomacorriente de tres agujeros, Las características de seguridad, incorporadas en su cafetera BUNN hacen que el uso diarioPresionar I para prender y presionar O para apagar. Este suministro constante de agua caliente asegura que el cafe seNOTA El interruptor del calentador controla solo el calentador de la jarra. Si la tapa se dejaC mas caliente que el agua que sale del grifo de aguaVuelva a apretar el cabezal rociadorNOTA Si el cabezal rociador se afloja y se cae mientras la cafetera esta colando, puedeObtenga agua caliente en cualquier momento. Solo necesitaColoque de nuevoConsulte los pasos en la pagina 5 para colar un cafe perfecto.Consulte la pagina 4 para la puesta a puntoNo cierre la tapa a menos que el embudoBTX ThermoFreshCuando se haya detenido el proceso de colado, SabiaS bVacie antes de llenar con cafeLos filtros BUNN son unicos. Estan hechos con un papel de calidad. S a b i ay pro esados para que proporcione el mejor sabor al cafe.





U s t e d filtros estan disenados para ser resistentes de modo que los lados. NuestrosLas cafeteras domesticas BUNN se fabrican para que hagan lo mismo que las famosas cafeterasLa diferencia de colado patentada de BUNN. El perfecto sabor del cafe es aromatico sin amargo y se determina por tres elementosLos ciclos de colado queSabiaSabiaSab aD d y o u al cliente de BUNN al 8003522866 para pedir un cabezalS biAjuste la cantidad de cafe para adaptarlo a. Us eMantenga el cafe almacenado en un sitio limpio y seco alejado de las salidas deUtilice suficiente cafe 12 cucharadas colmada por taza o aproximadamente 3.8 cm deUtilice una jarra termica si piensa mantener el cafe durante 2030 minutos. El cafeAsegurese de limpiar la jarra todos los dias. Precaliente la jarra termica con agua caliente para obtener mejores resultados. Utilice solo los filtros de papel BUNN para que se ajusten bien y funcionenDesechar el filtro y la borra inmediatamente despues de colar para evitar que traspasenLimpie la cafetera BUNN on agua y liquido suave para lavar platos, por lo menos unaSabiaEl agua fresca, de buen sabor, es esencial para una perfecta taza deDespues de todo, mas del 98% de la bebida esta compuesta. S i db i a uSabBUNN recomienda que EVITEMezclar el cafe fresco colado con cafe colado previamente.Colar sobre la borra. Vous utilizada previamente todo el sabor ya ha sido completamenteRecalentarServir el cafe colado con granos o cafe molido con fecha de vencimiento que hayaDejar que el cafe se "hornee" en un calentador. El tiempo maximo permitido para el cafeServir cafe en jarras que no esten limpias, debido a que los acidos u otros materialesOcasionalmente limpie la parte externa de la cafetera, incluyendoEl embudo para colar y la jarra son aptas paraPor favor consulte la pagina 9 para las instrucciones deLa frecuencia con la cualLlame al 8003522866 o visitePuede que necesite girar, empujar y ejercer algunaEl agua fluira en la jarra.

Si estan obstruidos con depositos minerales oLimpie el cabezal rociadorEnjuague el cabezal rociador con agua y luegoLa frecuencia de la limpiezaRetire el embudo para colar y el cabezal rociador de la cafetera. Limpie el cabezal rociador con un pano y detergente suave.Con el embudoCuando haya

pasado completamente, vacie la jarra y Continúe con el paso 9. Cuando el agua haya dejado Repita este proceso y coloque la jarra aparte. Continúe con la cafetera volteada hasta Coloque la jarra en la Repita este proceso con otra jarra de Coloque la jarra en la placa base y cierre la tapa. D i dla yo Vierta jarras adicionales de agua nueva Permita que el agua del tanque S a basi a este l mpiando su cafetera, no olvide verificar el asa de la jarra La Valvula en la tapa. Vo Limpieza Gire la tapa en sentido antiez u Levante en el extremo y hale hacia arriba. Despues de enjuagar, reemplace alineando la pestana El embudo para colar y la jarra son aptos para lavar platos en la rejilla superior. Para un mejor Vierta una jarra de Coloque la jarra en la placa base de la cafetera y cierre la tapa. Cuando Deje reposar la jarra durante 10 15 minutos. Utilizando un cepillo Ocasionalmente frote el reborde de la jarra por Cuando termine, deseche la solucion en el Para drenar su cafetera, siga el Retire el embudo para colar y el cabezal rociador de la cafetera y Cuando el agua haya Repita este proceso y coloque la jarra a un lado. La mayor parte del agua del tanque fluira por la abertura del tubo del cabezal rociador. Tambien puede fluir por el area alrededor de la tapa superior. Continúe volteando la Bunn O Matic Corporation, 1400 Stevenson Drive, Springfield, IL 62703, 800 352 2866. Para recibir asistencia integral, por favor tenga a mano el codigo de fecha cuando llame Accesorios BUNN. BUNN ofrece una linea completa de accesorios Las toallitas para cafe ayudan a quitar las manchas Visite [www.bunn.com](http://www.bunn.com) para pedir repuestos y accesorios o llame a la Division al Detal de BUNN al 800 352 2866. Problema. Solucion.

<http://adanateknikservis.web.tr/wp-content/plugins/formcraft/file-upload/server/content/files/1626d6a2e4cfd5---3g3ax-mx2-ect-manual.pdf>

El cafe no sale Limpie si fuese necesario. Ve a Colo solo parte de la jarra El embudo se desborda. Consulte la El cafe esta frio El cafe no se mantiene caliente Sonido alto que retumba. Refierase a la pagina 8. El flujo de agua comienza antes de La herramienta para desprender el La cafetera tiene fuga. Brewers Cafeteras domesticas o llame al 800 352 2866. Tres 3 anos desde la fecha de la compra original de una CAFETERA NUEVA. La fecha que sea posterior a los tres 3 anos de la fecha de compra original o posterior al ano REEMPLAZADA cuando se la devolvio a Bunn O Matic antes de que venza la garantia de la Un 1 ano de garantia desde la fecha en que el cliente haya recibido la CAFETERA REPARADA O. REEMPLAZADA cuando se haya devuelto a Bunn O Matic despues de que la nueva garantia de la Un 1 ano a partir de la fecha de compra de una CAFETERA REMANUFACTURADA. Si el defecto aparece durante el periodo de garantia, repararemos o reemplazaremos la cafetera Esta garantia no cubre Esta garantia le otorga derechos legales especificos, pero tambien podria tener otros derechos que Record para Mantenimiento de Limpieza. Record the dates that deliming or periodic cleaning of your brewer was done. Registrar las fechas del desincrustamiento o limpieza periodica que se ha hecho a la cafetera. Springfield, IL 62703 USA File Type Extension pdf. PDF Version 1.7. Linearized Yes. XMP Toolkit Adobe XMP Core 4.0c316 44.253921, Sun Oct 01 2006 170823. Modify Date 20090107 0830300600. Create Date 20090107 0830300600. Metadata Date 20090107 0830300600. Document ID uuidabe0e87c57f04475b5b74de02ef67c21. Instance ID uuida00a7251ab5442f9aca2594a88cb7d91. Has XFA No. Page Count 32. Discover everything Scribd has to offer, including books and audiobooks from major publishers. Start Free Trial Cancel anytime.

Bunn Thermofresh Manual Uploaded by annaleatoo 100% 1 100% found this document useful 1 vote 270 views 14 pages Document Information click to expand document information Description Manual for the Bunn Thermofresh coffeemaker. Report this Document Download Now save Save Bunn Thermofresh Manual For Later 100% 1 100% found this document useful 1 vote 270 views 14 pages Bunn Thermofresh Manual Uploaded by annaleatoo Description Manual for the Bunn Thermofresh coffeemaker. Full description save Save Bunn Thermofresh Manual For Later 100% 100% found this document useful, Mark this document as useful 0% 0% found this document not useful, Mark this document as not useful Embed Share Print Download Now Jump to Page You are



on page 1 of 14 Search inside document Browse Books Site Directory Site Language English Change Language English Change Language. You should have JavaScript enabled in your browser to utilize the functionality of the website Parts Town and 3Wire have joined forces and teamed up with IPC, combining the team you know with the largest inventory in the industry and cuttingedge technology to give you the absolute best experience. Things look a little different, thats true, but you are indeed in the right place. Hi there, welcome to Parts Town. Parts Town and 3Wire have joined forces and teamed up with NDCP, combining the team you know with the largest inventory in the industry and cuttingedge technology to give you the absolute best experience. Parts Town and 3Wire have joined forces and teamed up with SMS, combining the team you know with the largest inventory in the industry and cuttingedge technology to give you the absolute best experience. Hi there! RSCS and Parts Town have joined forces, combining the team you know with the largest inventory in the industry and cuttingedge technology to give you the absolute best experience. Parts Town and 3Wire Foodservice have joined forces.

Now youll work with the great team you know, while having access to the largest inventory in the industry and cuttingedge technology. Lets go! Continue to Parts Town What You Can Expect Always Genuine OEM The Most InStock Parts on the Planet Breakthrough Innovations Exceptional Customer Experience Same Day Shipping Ready to get started. Lets go! Continue to Parts Town Looking for beverage equipment parts. Marmon Link is the new home for genuine OEM parts for the Marmon family of equipment manufacturers. Find beverage dispense parts and accessories, as well as parts for Cornelius, Prince Castle, Silver King, Angelo Po, and Saber King units. Continue to Marmon Link Please try again. Please try again later. Please try again later. No worries, it's really easy. No need to remember another username, you will now use your email address. Its listed below. Once logged in you can view pricing and order these parts. OK Please try again. Always Available free backorder shipping applies to UPS Ground shipments only. Excludes international orders, UPS Freight orders, consolidated shipments, factory drop ship orders, and ship complete orders. Program details subject to change at any time. No need to type it all again. That just makes things WAY easier. Plus, youll be able to access any discounts or contract pricing that may be available to you. Thats important. The real question is, why wouldnt you log in Everybody loves cookies. Okay, theyre not those kind of cookies, but theyre still great. Its stainless steel tank is equipped with an internal thermostat so there is always hot water ready for brewing. Within 3 minutes the Bunn BTXB brews up to 10 cups of superior coffee directly into a stainless steel vacuum insulated carafe, so it is perfect on those busy mornings when you just want to grab your coffee and go. Controls With the Bunn BTXB ThermoFresh Brewer you need only devote a short time to the initial startup process to prepare it for daily use.

Follow the steps for priming the BTXB that are included in the instruction manual, wait 15 minutes while the water heats up and then you are ready to brew your first pot. Brewing cup after cup of freshbrewed coffee is a breeze. After measuring coffee into the filter, pour 4 cups 20 oz to 10 cups 50 oz of cold water into the machine, close the lid and let the brewing process begin. A pot brews in 3 minutes because this coffee maker keeps water at the proper brew temperature at all times. The Bunn ThermoFresh Brewer is designed to be ready to brew anytime, so you do not have to switch the machine on or off on a daily basis. However, it is recommended that if you're going to be away from the machine for more than 3 days, you should turn off the switch located on the side of the machine to shut off all of the electrical components. If the coffee maker has been shut off for an extended period of time, you will need to go through the initial startup process when you first turn it on again. This brewer delivers up to 10 cups of coffee in 3 minutes into an insulated carafe that will keep the coffee hot for hours. It is also recommended that you rinse the inside of the carafe with hot water prior to brewing coffee, which will serve to keep the coffee warmer for a longer period of time. This insulated container keeps coffee at an optimum temperature for about 2 hours and lets you avoid the burnt or "cooked" taste many heated glass carafes create. The thermal carafe is

doublewalled, dishwasher safe, and is topped with a convenient closeandbrew lid. It has an easy to grip plastic handle and a short, somewhat stout pouring spout. Because of its unique design, this spout provides easy pouring and is virtually spill free. The first time you use this brewer the boiler will take up to 15 minutes to heat. However, once the boiler is finished with the initial start up process, the stainless steel boiler will maintain the proper temperature and always brew coffee within 3 minutes.

Every time the vacation switch is activated this brewer will require another 15 minutes to heat the water when the machine is turned on again. The thermal carafe will keep your coffee warm for hours without electric heat. And, if you rinse the inside with hot water just prior to brewing coffee, you can improve heat retention even further. The reservoir, located at the top and back of the machine is easy to fill. After the BTXB is fully heated, the builtin thermostat monitors water temperatures at all times, making sure your water remains at a steady 200 o F. It is recommended that you use filtered water for brewing, which will enhance the coffee's flavor. If there is no water filtration system in your home try using bottled water or attaching a filter to your tap. This filter can be reordered through Bunn and are also found on our Accessories page. This long metal rod is used to clean the sprayhead. It looks like a tight metal spring and should be inserted into the tube above the sprayhead periodically to loosen lime build up. There are simple instructions on how to disassemble the sprayhead and insert the deliming tool, and the Bunn BTXB also comes with 20 fluted paper filters and filter reorder instructions. Be the first to review this product! Please choose a different delivery location. Our payment security system encrypts your information during transmission. We don't share your credit card details with thirdparty sellers, and we don't sell your information to others. Please try again. Please try again. In order to navigate out of this carousel please use your heading shortcut key to navigate to the next or previous heading. Register a free business account Please try your search again later. Also, its unique sprayhead ensures even, complete coffee flavor extraction. The patented BUNN brewing system showers the water over the ground coffee using a specially designed sprayhead to create optimum turbulence in the funnel for just the right amount of time.

As a result, BUNN home brewers produce 10 cups of perfect coffee in about 3 minutes less than half the time of most regular coffee makers. This is a highaltitude version of the BUNN thermal home brewer with stainless steel vacuum insulated carafe and stainless accents. Specially engineered thermostat for use above 5,000 ft. The following states have the corresponding number of cities in which use of a high altitude version is recommended. Arizona 270 California 411 Colorado 1106 Hawaii 10 Idaho 342 Iowa 1 Minnesota 1 Montana 350 Nevada 608 New Mexico 1124 North Carolina 4 Oregon 15 South Dakota 50 Texas 3 Utah 677 Vermont 1 Washington 2 Wyoming 291 To calculate the overall star rating and percentage breakdown by star, we don't use a simple average. Instead, our system considers things like how recent a review is and if the reviewer bought the item on Amazon. It also analyzes reviews to verify trustworthiness. Please try again later. Big E 3.0 out of 5 stars So I took it back to the department store and ordered the thermal version on Amazon. Im much happier with the thermal unit as I dont have to worry about turning off my coffee maker The best things about the Bunn unit is it makes coffee in a blink, is simple, and is easy to maintain. However, I like strong coffee and it is nearly impossible to make it with the bunN. If you like coffee that you get from a coffee shop, not a Starbucks, you will love this machine. If you like stronger coffee you probably should look elsewhere as Ive tried numerous methods to make the coffee stronger and been successful only a few times its hit or mess These are the most simple coffee makers, yet the best. If you are interested in automatic makers that have clocks, timers, flavor settings you are wasting you money and time. If you set up your coffee maker before you go to bed it will take less than 5 minutes to have a full pot of the best coffee. The thermal carafe works very well and keeps the coffee at a good temperature for hours.

It makes coffee in just a few minutes. The only downside is that it continually uses energy by heating water stored inside so that it is available hot on demand. I had another brand that heated water only when it was time to brew and it was nearly as fast. Also, there isn't a timer to program a brewing time. We simply get up, go to the kitchen and close the lid on the water reservoir and the hot coffee is ready in minutes. Nevertheless, it's a good machine. Most have lasted for 5 to 6 years. They have an issue with the water flow pressure that will overflow the basket unless you get a special dispersal spray head. I had one from my previous maker so was not an issue for me other than the first pot ran over on to my countertop. This model takes about a minute longer than my last one to brew a pot 4 min. I contacted Bunn customer service and they replied within 24 hours, explained why it was happening and sent a special sprayer head. Works great now. The insulated carafe keeps the coffee hot up to 4 hours. We have had 4 or 5 high-end brewers that did not brew hot enough to extract the flavor from the beans. We have had grinder and non-grinder coffee brewers. Because the brewer maintains heated water, with this product the brewing is so quick, the gratification is not long coming. We grind the beans and in 3 minutes we have really hot coffee. The thermal carafe indeed maintains a toasty temp. I could not be happier as I am fatigued with buying coffee makers that disappoint. A previous reviewer mentioned the filters are hard to find. I do not know if that is accurate because I ordered filters with the brewer. So far, so good! So they overnighted me a new one and the top stopper for the water was lying in the top not in position so water ran right through it. I had to fix it myself and then didn't come with the dismantling tool. The quality control sucks! Shipment received two days early and in good shape. Very pleased with performance and quality.

<https://labroclub.ru/blog/3hp-briggs-and-stratton-service-manual>